



QUANTUM

LOGISTICS PARK

SITE LAYOUT & FLOOR PLANS



THREE

SITE PLAN

| FLOOR | SQ M | SQ FT |
|--|---------------|----------------|
| WAREHOUSE INCL. MARSHALLING OFFICE | 15,250 | 164,149 |
| GROUND FLOOR OFFICES & STAFF FACILITIES | 409 | 4,402 |
| FIRST FLOOR OFFICES (incl. Plant) | 463 | 4,983 |
| SECOND FLOOR OFFICES | 428 | 4,607 |
| TOTAL | 16,550 | 178,141 |

Measurement Application - Gross External.

FAST CONNECTIVITY TO
M50 Motorway, N2, Dublin Airport
and the Port Tunnel

**16 DOCK
LEVELLERS**
4 EURO DOCK
LEVELLERS

**CAT A OFFICES AND
STAFF FACILITIES**

**MULTI-USE
GAMES AREA
WITHIN PARK**

**RUNNING
TRACK WITHIN
PARK**



**9 HGV PARKING
SPACES**

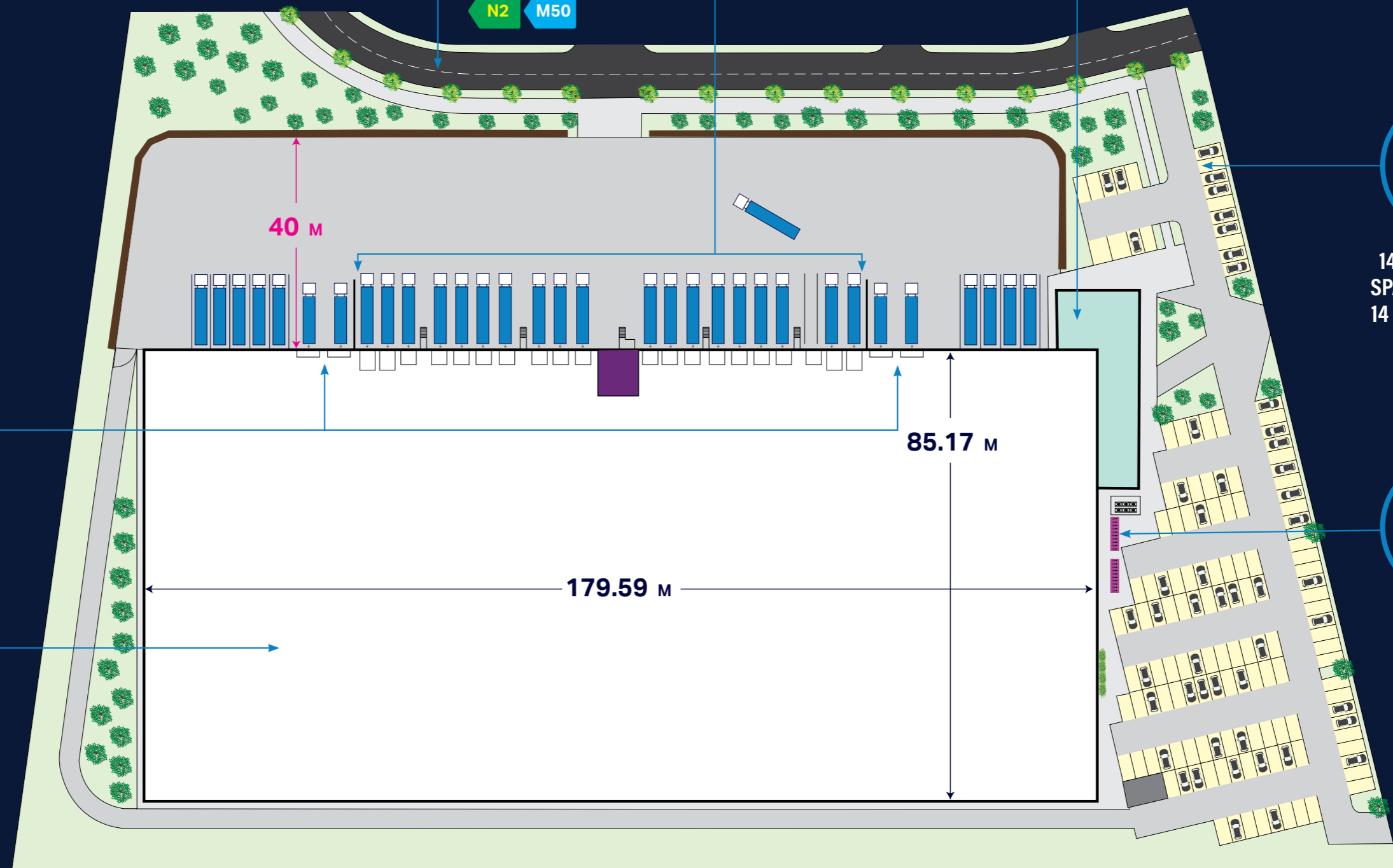


**4 LEVEL
ACCESS DOORS**



**14 M CLEAR
INTERNAL HEIGHT**

ACCESS TO:



**146 CAR PARKING
SPACES INCLUDING
14 ELECTRICAL CAR
SPACES**



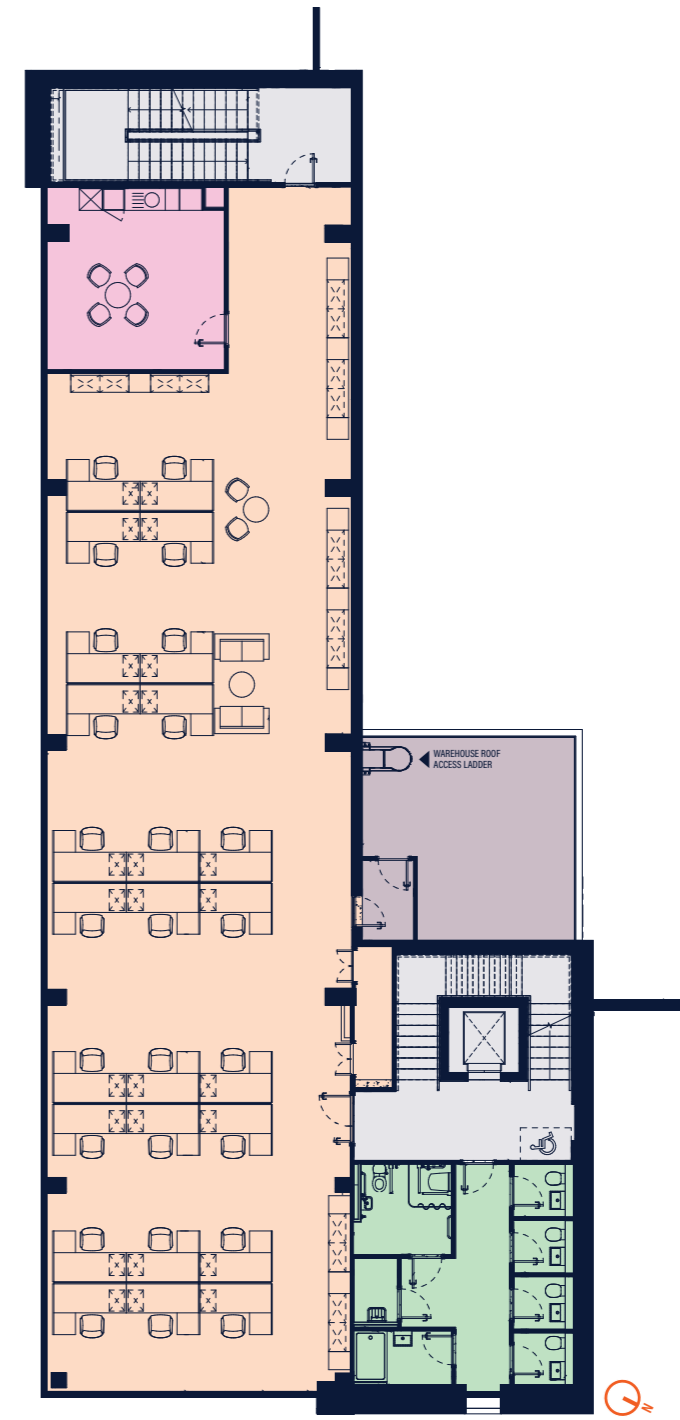
**20 BICYCLE
SPACES**

OFFICES & STAFF FACILITIES FLOORPLANS

- Office
- Core
- Reception
- Amenities
- Canteen
- Plant



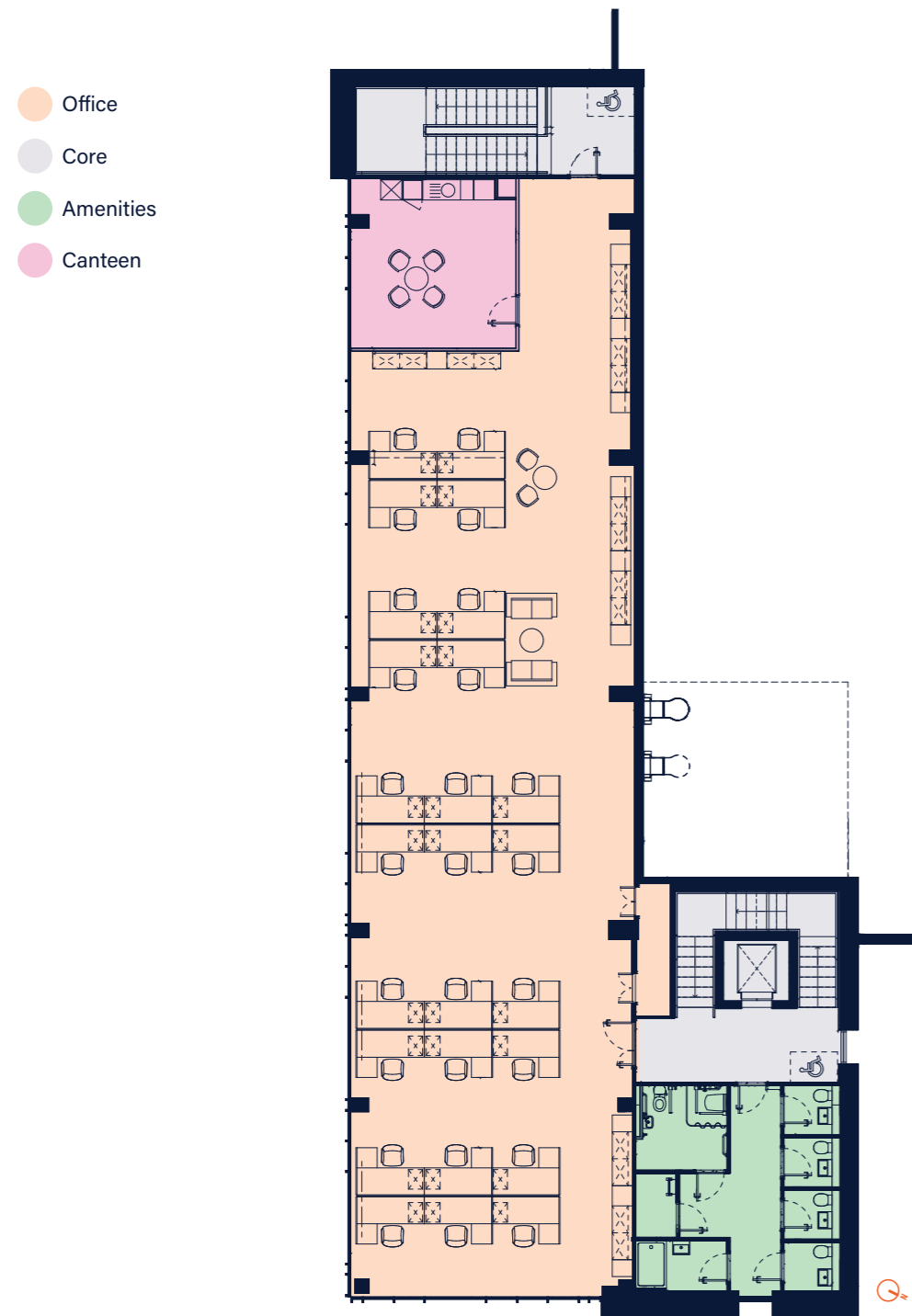
GROUND FLOOR
409 SQ M (4,402)



FIRST FLOOR (INC. PLANT)
463 SQ M (4,983)

NOTE: Floor plan layouts are indicative only

OFFICES & STAFF FACILITIES FLOORPLANS



SECOND FLOOR
428 SQ M (4,607)

NOTE: Floor plan layouts are indicative only

PROFESSIONAL TEAM

| | |
|-----------------------------|----------------------------|
| ARCHITECTS: | TOT ARCHITECTS |
| STRUCTURAL ENGINEERS: | OCSC |
| QUANTITY SURVEYORS: | KSN |
| M&E ENGINEERS: | METEC |
| SUSTAINABILITY CONSULTANTS: | METEC CONSULTING ENGINEERS |
| FIRE & DAC: | ORS |

JOINT AGENTS



PSRA Lic. No. 002027

Philip Harvey

T: +353 1 453 2755
E: pharvey@harvey.ie
harvey.ie



PSRA Lic. No. 001528

Garrett McClean

T: +353 1 618 5500
E: garrett.mcclean@cbre.com
cbre.ie



DISCLAIMER

These particulars are set out as a general outline for potential tenants and whilst every care has been taken in their preparation, they do not constitute an invitation to treat, or an offer or contract of any kind. All descriptions, floor areas, site areas, dimensions, plans, maps, computer generated images, references to condition, permissions or licences of use or occupation, access and other details, are for guidance purposes only and may be subject to change. The particulars and information are given in good faith and are believed to be correct, but any intending tenant should not rely upon them as statements or representations of fact, and is specifically advised to satisfy themselves as to their accuracy by carrying out their own due diligence at their own expense. No employee or principal of William Harvey Ltd t/a HARVEY or CBRE has any authority to make or give any representation or warranty in respect of the property and no liability will be accepted in respect of any loss suffered by any intending tenant or third party arising out of these particulars or information. Rents are quoted exclusive of outgoings, VAT and any other applicable taxes that the tenant will be liable for.

All images depicting Unit Three Quantum Logistics Park are CGI's (Computer Generated Images).

TEAM



QUANTUMLOGISTICSPARK.COM