



QUANTUM

LOGISTICS PARK

SITE LAYOUT & FLOOR PLANS



TWO

SITE PLAN

FLOOR	SQ M	SQ FT
WAREHOUSE INCL. MARSHALLING OFFICE	7,756	83,494
GROUND FLOOR OFFICES & STAFF FACILITIES	353	3,803
FIRST FLOOR OFFICES (incl. Plant)	393	4,228
TOTAL	8,502	91,525

Measurement Application - Gross External.

14 M CLEAR
INTERNAL HEIGHT

MARSHALLING
OFFICE

RUNNING
TRACK WITHIN
PARK

MULTI-USE
GAMES AREA
WITHIN PARK



DublinAirport >> ACCESS TO: M50 M1



6 HGV PARKING
SPACES

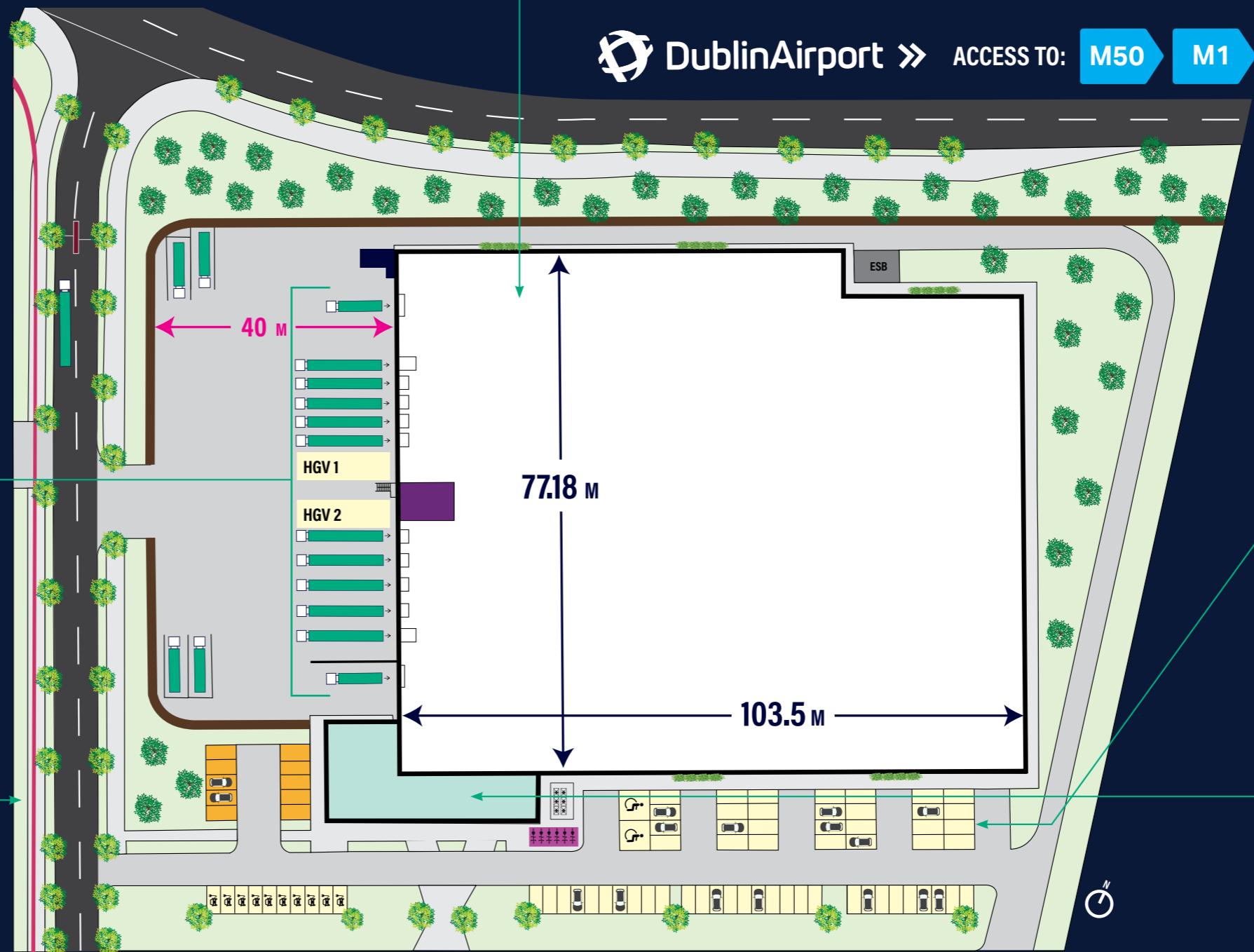


8 DOCK LEVELLERS,
2 EURO DOCK LEVELLERS
& 2 LEVEL ACCESS DOORS



FAST CONNECTIVITY TO
M50 Motorway, N2, Dublin Airport
and The Port Tunnel

ACCESS TO:



10 BICYCLE SPACES



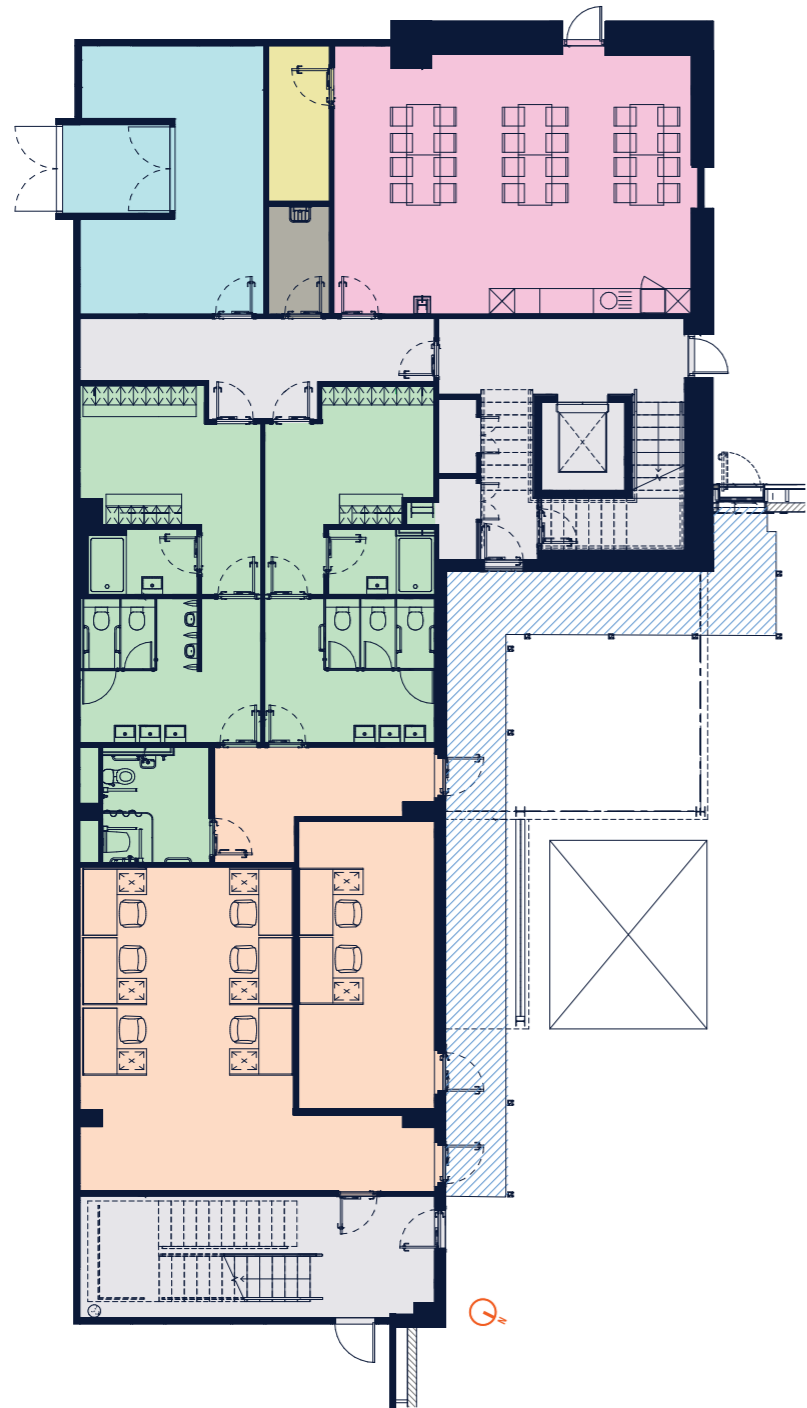
79 CAR
PARKING SPACES
Including 10 electric
car parking spaces



CAT A OFFICES AND
STAFF FACILITIES

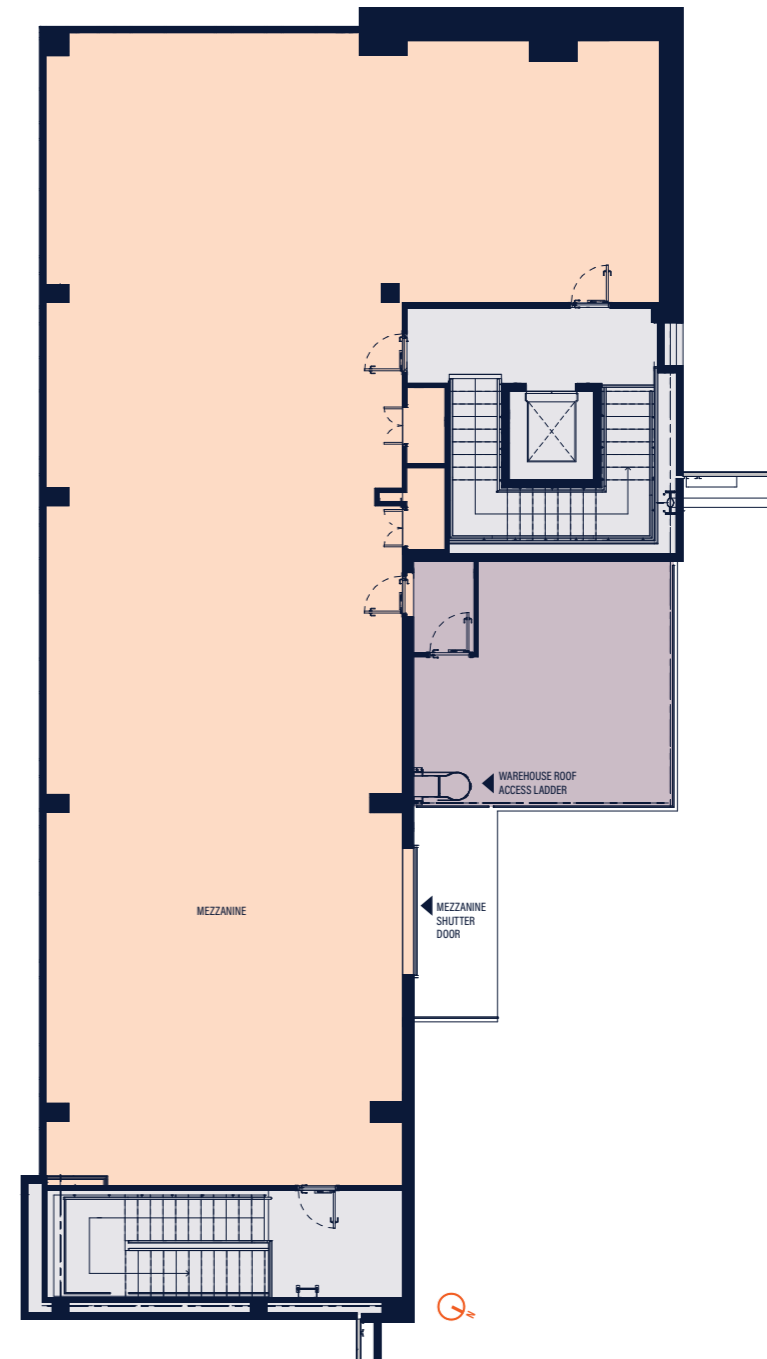
OFFICES & STAFF FACILITIES FLOORPLANS

- Office
- Core
- Reception
- Amenities
- Canteen
- Plant
- Comms Room
- Cleaner Store



GROUND FLOOR
353 SQ M (3,803)

NOTE: Floor plan layouts are indicative only



FIRST FLOOR (INC. PLANT)
393 SQ M (4,228)

IPUT REAL ESTATE DUBLIN

Our Vision

Our vision is to set the benchmark for excellence in Irish real estate and positively shape the future of our city.

Who We Are

We are Ireland's leading commercial property investment company and the largest owner of offices and logistic assets in Dublin. We are a long-term investor with a 50-year track record in real estate. We own and manage a portfolio comprising over 5 million sq ft, with a net asset value of over €2.7 billion.

We have an international reputation for delivering the highest quality in everything we do. Our goal is to own exceptional buildings that set new standards in design and sustainability in order to attract best-in-class occupiers, drive long-term shareholder value and contribute positively to the communities in which we work. By sustainably investing in the public realm, we make a positive contribution to the social and cultural fabric of our city.

Philosophy

We are passionate about our buildings and our presence in the city. We make long-term investment decisions for the benefit of our stakeholders, with an emphasis on excellence in design, sustainability and the occupier experience.

iput.com



Pictured:

1. Unit 1 Dublin Airport Logistics Park (184,886 sq ft)
2. 103 Northwest Business Park (134,484 sq ft)
3. Unit G, Aerodrome Business Park (120,300 sq ft)



PROFESSIONAL TEAM

ARCHITECTS:	TOT ARCHITECTS
STRUCTURAL ENGINEERS:	OCSC
QUANTITY SURVEYORS:	KSN
M&E ENGINEERS:	METEC
SUSTAINABILITY CONSULTANTS:	METEC CONSULTING ENGINEERS
FIRE & DAC:	ORS

JOINT AGENTS



PSRA Lic. No. 002027

Philip Harvey

T: +353 1 453 2755
E: pharvey@harvey.ie
harvey.ie



PSRA Lic. No. 001528

Garrett McClean

T: +353 1 618 5500
E: garrett.mcclean@cbre.com
cbre.ie



DISCLAIMER

These particulars are set out as a general outline for potential tenants and whilst every care has been taken in their preparation, they do not constitute an invitation to treat, or an offer or contract of any kind. All descriptions, floor areas, site areas, dimensions, plans, maps, computer generated images, references to condition, permissions or licences of use or occupation, access and other details, are for guidance purposes only and may be subject to change. The particulars and information are given in good faith and are believed to be correct, but any intending tenant should not rely upon them as statements or representations of fact, and is specifically advised to satisfy themselves as to their accuracy by carrying out their own due diligence at their own expense. No employee or principal of William Harvey Ltd t/a HARVEY or CBRE has any authority to make or give any representation or warranty in respect of the property and no liability will be accepted in respect of any loss suffered by any intending tenant or third party arising out of these particulars or information. Rents are quoted exclusive of outgoings, VAT and any other applicable taxes that the tenant will be liable for.

All images depicting Unit Two Quantum Logistics Park are CGI's (Computer Generated Images).

TEAM



QUANTUMLOGISTICSPARK.COM